



LOW EXPANSION FOAM BRANCH PIPE

Long range performance



021-32222322
firedefenders@gmail.com

TECHNICAL DATA

FIRE FIGHTING FOAM EQUIPMENT

The Defender series of low expansion foam branch pipes has been designed with long range performance in mind.

There are three basic models with nominal foam solution throughputs of 225, 450 and 900 liters/mm at 7 bar. Self-inducing models are available in the 225 and 450 liter/minute versions. All models produce finished foams of nominal expansion 10 : 1 and give foam streams of an exceptional range.

To get the best results from these branch pipes we recommend use with either Tank master Fluor protein foam or Alco seal AR-FFFP multi-purpose foam concentrate. The /SI models are fitted with a self inducing foam inlet connection, foam concentrate pick-up tube and piercer.

Using an Inductor

Defender Low Expansion Foam Branch pipes have been designed to match the characteristics of Defender Foam Inductors. Correct matching is essential if optimum performance is to be obtained. If the flow rating of the branch pipe is greater than that of the inductor, throw from the branch pipe will be reduced. If the flow rating of the branch pipe is less than that of the inductor, induction may cease.

Fittings

Low Expansion Foam Branch pipes are normally supplied with a 2½” British Instantaneous coupling to BS 336 in light alloy / Brass, or a 2” BSP (m) threaded connection. Other adaptors may be selected from the “Armourite” range. An on/off ball valve may be specified as an optional extra on the /H models.

Specification

Light alloy body finished in Stainless Steel Pipe.
Oil resistant synthetic rubber protection rings



Defender/FE/FG-001

Foam Inline Inductor with Foam Branch pipe nozzle

TECHNICAL DATA

FIRE FIGHTING FOAM EQUIPMENT

FOAM IN-LINE INDUCTOR

Foam concentrate is drawn through a pick up tube at a preset foam concentrate amount and is added into the water stream. Available with two flow rates.

Body material: Aluminum Alloy / Gun Metal.

Filters: Brass

Foam concentrates rate adjustable foam 1% to 6%. Flexible foam concentrates suction hose.

Inlet and outlet connection BS 336 Instantaneous.

Code No.	Flow rate @ 101 Psi (7 Bar)
LEFN-I-225	225 LPM
LEFN-I-450	450 LPM



Defender/FE/FG-002

LOW EXPANSION FOAM BRANCH PIPE

Material: Aluminum Alloy and SS Pipe with rubber handle

Suitable for AFFF, protein and AR foam.

Available with two flow rates.

Expansion ration: 7-8

Inlet: BS 336 Instantaneous Gunmetal male connection.

Foam branch pipe is available with integral foam inductor and pick up tube.

Code No.	Flow rate @ 101 Psi (7 Bar)	Throw Range
LEFN-D-225	225 LPM	10 to 15m
LEFN-D-450	450 LPM	15 to 20m



Defender/FE/FG-003

FIXED FOAM IN-LINE INDUCTOR BRANCH NOZZLE

Foam Inline Inductor with Foam Branch pipe nozzle

FIXED FOAM IN-LINE INDUCTOR

Foam concentrate is drawn through a pick up tube at a preset foam concentrate amount and is added into the water stream. Available with two flow rates.

Body material: Aluminum Alloy / Gun Metal.

Filters: Brass

Foam concentrates rate adjustable foam 1% to 6%. Flexible foam concentrates suction hose.

Inlet and outlet connection BS 336 Instantaneous.

Code No.	Flow rate @ 101 Psi (7 Bar)
LEFN-I-225	225 LPM
LEFN-I-450	450 LPM

LOW EXPANSION FOAM BRANCH PIPE

Material: Aluminum Alloy and SS Pipe with rubber handle

Suitable for AFFF, protein and AR foam.

Available with two flow rates.

Expansion ration: 7-8

Inlet: BS 336 Instantaneous Gunmetal male connection.

Foam branch pipe is available with integral foam inductor and pick up tube.

Code No.	Flow rate @ 101 Psi (7 Bar)	Throw Range
LEFN-D-225	225 LPM	10 to 15m
LEFN-D-450	450 LPM	15 to 20m



Defender/FE/FG-003



Defender/FE/FG-004



FIXED FOAM IN-LINE INDUCTOR BRANCH NOZZLE

Foam Inline Inductor with Foam Branch pipe nozzle

DESCRIPTION Inline Foam Inductor is used to induct the foam liquid concentrate in water stream to supply proportioned solution of the liquid concentrate and water, to the foam producing equipment. The inductors are designed primarily for use in the fixed foam installation to provide a simple and reliable method of proportioning in constant flow applications. Each Inductor is designed for a pre-determined water pressure to give the correct proportioning at that pressure and discharge rate. The increase or decrease of the inlet pressure will result in an increase or decrease in the flow rate, which in turn will change the proportioning.

SPECIFICATION Inductors are available in three different materials of construction, a wide range of flow from 75 to 3500 liters per minute at inlet pressure between 6.4 to 12 bar as shown in the graph. Each Inductor is accurately calibrated at the factory to match the flow, pressure and the induction requirement of the system. This enables to ensure and achieve the correct performance.

SYSTEM DESIGN DETAILS The Inductor must be selected and installed in a hydraulically calculated system considering the limitation of permissible back pressure. The maximum back pressure allowed is expressed as 65% of pressure at the inlet of the Inductor. The optimum performance of Inline Inductor is with pressure above 8 Bar (115 PSI). In the fixed foam system installation the inductor can be mounted above the concentrate storage tank. The maximum height of the Inductor suction pipe above the bottom of the storage tank to the inductor center should not exceed 1.75 meters, with AFFF & 0.9 meter for AR-AFFF 3/3% foam concentrate. A minimum of 600 mm of unobstructed straight pipe line should be provided at the inlet and outlet of the inductor. The inductor must be installed in a system having minimum of 6.5 bar inlet pressure at inlet of inductor. The diameter of water supply pipe and water foam solution pipe should not be less than that of the diameter of the inductor. A shut-off valve provided in the induction line must be full bore on-off valve. The non-return valve if fitted in the foam induction pipe line, then it must be supplied or recommended by HD, so that the induction rate is properly calibrated in factory before supply. For best performance the inlet pressure at the inline inductor should be 6.8 bar or higher. Size are available in 2.5", 3", 4" and 6" Dia and also will made client requirements.

APPLICATION Inline Foam Inductors are quite suitable for application utilizing single fixed discharge device. The Inline Inductors are not suitable for variable flow or pressure applications. The Inline Inductors are not suitable for Sprinkler system or system utilizing multiple small orifice discharge devices, which may result in increased back pressure due to blockage of discharge device.



Defender/FE/FG-005



MOBILE FOAM MASTER 150 to 200 Liters

Foam Inline Inductor with Foam Branch pipe nozzle

Defender/FE/FG-001



021-32222322
firedefenders@gmail.com

MOBILE FOAM FIRE EXTINGUISHER ON TROLLEY

The foam liquid extinguisher on trolley is highly maneuverable and it is suitable for out breaks of fire that cannot be dealt with by using portable extinguisher. It is effective on flammable liquid fire. This is a self-contained foam production unit which only requires connection to suitable water supply (minimum water supply required is 180 LPM at 6 bar).

STANDARD FEATURES:

- 2.5" x 100ft length fire hose with aluminum BS336 Coupling , NAFFCO.
- 225 LPM Foam Inductor with pick up tube.
- 225 LPM Low Expansion branch pipe.
- 150 - 200 Liters capacity Foam AFFF, concentrate and fiber glass tank on trolley.
- Foam AFFF 3% filled Trolley
- 02 Fixed wheel and 02 Moveable and Lock wheel

APPLICATION:

Protection of oil storage installation loading, stations, paint and solvent stores.



Defender/FE/FG-006



Defender/FE/FG-007



RESPONDER 120 Liters

Foam Monitor with Foam Branch nozzle



021-32222322
firedefenders@gmail.com

RESPONDER

is a self-contained mobile foam monitor unit which has been specifically developed for the rapid deployment of Foam extinguishing agent to fires and chemical spills.

Mobile Foam Monitor can be operated by one person. This unit is an Ideal choice for the protection of small flammable liquid hazard.

SPECIFICATION

Foam : Foam AFFF 3%, EN Standard

Foam Tank Capacity : 120 – Liters

Tank material : Fiber with MS Trolley 3-wheeler

Monitor : MS fabrication 2.5" Horizontal 360°, 75° above, 35° below

Foam Nozzle : 225 Liters, Brass with SS Pipe

Pressure Required 6 – 8 Bar

Inlet Connection : 2.5" Instantaneous BS336 Brass male

Hose Pipe 2.5" Dia x 100ft length fitted with male female coupling NAFFCO.



Defender/FE/FG-008

DESCRIPTION

mobile foam unit is a fully self-contained unit, which has been developed for the rapid deployment of foam extinguishing system to fires in high-risk places such as loading terminals, oil storage areas, boiler rooms, engine compartments, and areas susceptible to chemical spills

HD mobile foam unit is ergonomically designed, it requires minimum effort for maneuvering and is perfect mobile foam cart for the purpose of effective fire-fighting

Fiber glass tank of capacity 160 liters in yellow finish, Optional construction Carbon Steel or Stainless Steel tank of capacity upto 220 liters

Two solid rubber wheels for easy maneuver by one person

Mounted with aluminum or bronze inductor of capacity 225 / 450 lpm (60 / 1

Provision for mounting two fire hoses 2.5"x 100ft length fitted with aluminum

Defender Inductor and Branch Pipe

SPECIFICATION

Foam : Foam AFFF 3%, EN Standard

Foam Tank Capacity : 150 – Liters

Tank material : SS 304 with 3-wheeler

Foam Nozzle : 225 Liters, Brass with SS Pipe

Pressure Required 6 – 8 Bar

Hose Pipe 2.5" Dia x 100ft length fitted with male female coupling

NAFFCO.



Defender/FE/FG-009



MOBILE FOAM TRAILER 500 Liters

Foam In-Line Inductor with Foam Branch nozzle

Defender/FE/RMFMU-120



021-32222322
firedefenders@gmail.com

DESCRIPTION

mobile foam Trailer SS 304 500 liters Capacity Tank unit is a fully self-contained unit, which has been developed for the rapid deployment of foam extinguishing system to fires in high-risk places such as loading terminals, oil storage areas, boiler rooms, engine compartments, and areas susceptible to chemical spills

HD mobile foam unit is ergonomically designed, it requires minimum effort for maneuvering and is perfect mobile foam cart for the purpose of effective fire-fighting

SS 304 capacity 500 liters in yellow finish, Optional construction Milled Steel and Stainless Steel tank of capacity upto 500 liters

Two solid rubber wheels for easy maneuver by one person

Mounted with aluminum or bronze inductor of capacity 225 / 450 lpm (60 / 120 gpm) and branch pipe

Provision for mounting two fire hoses 2.5"x 100ft length fitted with aluminum male female BS336 couplind. NAFFCO

Defender Inductor and Branch Pipe

SPECIFICATION

Foam : Foam AFFF 3%, EN Standard 500 Liters

Foam Tank Capacity : 500 – Liters capacity

Tank material : SS 304 with 3-wheeler

Foam Nozzle : 225 Liters, Brass with SS Pipe

Pressure Required 6 – 8 Bar

Hose Pipe 2.5" Dia x 100ft length fitted with male female coupling NAFFCO.

Hose Cabinet for fire fighting equipments



Defender/FE/FG-0010



MOBILE FOAM TRAILER 1000 Liters

Indigenous Comprising of the following equipment's



021-32222322
firedefenders@gmail.com

DESCRIPTION

Constructed of High density polyethylene complete with protective aluminum grid, water level indicator, filling & drain points and interconnecting piping & valves.

Trailer constructed of Mild steel frame complete with 02 Nos. solid rubber wheels, Axle with locking front of 01 revolving wheel

Fire Water Monitor with 2.5" Foam Triple Purpose Brass Nozzle and Foam Pickup tube connection.

Water Inlet 2.5" Brass BS-336 male connection and also available with 2-way collecting breaching Inlet

Fixing of MS sheet 16swg Cabinet 02 Nos. for Hose Pipe and Nozzle

mobile foam Trailer 1000 liters Capacity Fiber Tank unit is a fully self-contained unit, which has been developed for the rapid deployment of foam extinguishing system to fires in high-risk places such as loading terminals, oil storage areas, boiler rooms, engine compartments, and areas susceptible to chemical spills

HD mobile foam unit is ergonomically designed, it requires minimum effort for maneuvering and is perfect mobile foam cart for the purpose of effective fire-fighting

Fiber 1000 liters, Optional construction Milled Steel and Stainless Steel tank of capacity upto 500 liters

Two solid rubber wheels for easy maneuver by one person

Mounted with aluminum or bronze inductor of capacity 225 / 450 lpm (60 / 120 gpm) and branch pipe

Provision for mounting two fire hoses 2.5"x 100ft length fitted with aluminum male female BS336 coupling. NAFFCO

Defender Inductor and Branch Pipe

SPECIFICATION

Foam : Foam AFFF 3%, EN Standard 1,000 Liters

Foam Tank Capacity : 1000 – Liters capacity

Tank material : with 3-wheeler or 5-wheeler client requirements

Monitor : MS fabrication 2.5" Horizontal 360°, 75° above, 35° below

Foam Nozzle : 225 Liters, Brass with SS Pipe

Pressure Required 6 – 8 Bar

Hose Pipe 2.5" Dia x 100ft length fitted with male female coupling NAFFCO.

Hose Cabinet for fire fighting equipment's



Defender/FE/FG-0011



MOBILE FOAM TRAILER 1000 Liters

Indigenous Comprising of the following equipment's

Defender/FE/RMFMU-120



021-32222322
firedefenders@gmail.com

DESCRIPTION

Easy maneuverability

Trolley with two solid rubber wheels

63 or 75 (2.5" or 3") monitors can be mounted

Water supply manifold with 2 or 4 inlet connections of 2.5" BSP instantaneous coupling

Epoxy painted

SPECIFICATION

Foam : Foam AFFF 3%, EN Standard 25 Liters

Foam Tank Capacity : 25 – Liters capacity

Tank material : SS 304 with 2-wheeler or client requirements

Monitor : MS fabrication 2.5" Horizontal 360°, 75° above, 35° below

Foam Nozzle : 225 Liters, Brass with SS Pipe

Pressure Required 6 – 8 Bar

Hose Pipe 2.5" Dia x 100ft length fitted with male female coupling NAFFCO.

Inlet 2.5" male BS336 connection Brass material



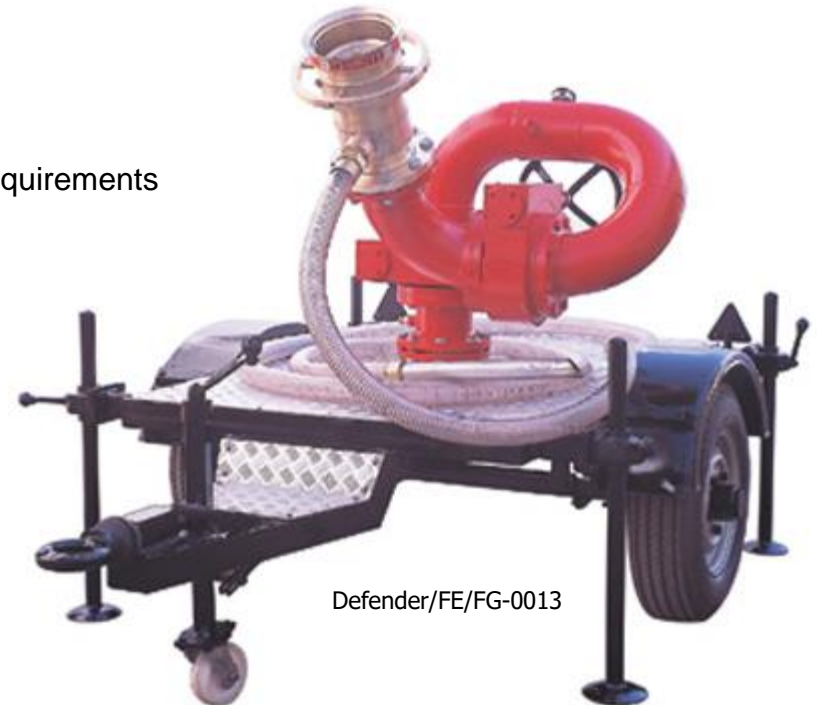
Defender/FE/FG-0012

DESCRIPTION

Rugged two wheel trailer
Easily maneuvered by two persons or pulled behind light truck or jeep
Monitor of 3", 4" or 6" size can be mounted with water supply manifold
Over run and manual brake
Four stabilizer legs for added safety
Low profile design for safety and stability
Trailer equipped with reflector
Provision of manifold having 2.5" or 4" BSP coupling at rear side of trailer for water supply to monitor from hydrant network
Aluminum chequered plate on trailer bed Epoxy painted

SPECIFICATION

Foam : Foam AFFF 3%, EN Standard 25 Liters
Trailer: Miled Steel and aluminum checker sheet 3-wheeler or client requirements
Monitor : MS fabrication 2.5" Horizontal 360°, 75° above, 35° below
Foam Nozzle : 500 Liters, Brass with SS Pipe
Pressure Required 6 – 8 Bar
Inlet 2.5" male BS336 connection Brass material x 03 Nos.



Defender/FE/FG-0013

DESCRIPTION

Rugged 2 / 4 wheeled trailer with various capacity of storage tank
Easy maneuvered by two persons or pulled behind light truck or jeep
80 or 100 mm (3" or 4") monitor mounted on tank
Over run and manual brake
Low profile design for safety and stability
Four stabilizer leg for added safety
Trailer equipped with reflector
Provision of manifold having 2.5" or 4" BSP coupling at rear side of trailer
Epoxy painted

SPECIFICATION

Foam : Foam AFFF 3%, EN Standard 25 Liters
Foam Tank Capacity : 25 – Liters capacity
Tank material : SS 304 with 3-wheeler or client requirements
Monitor : MS fabrication 2.5" Horizontal 360°, 75° above, 35° below
Foam Nozzle : 225 Liters, Brass with SS Pipe
Pressure Required 6 – 8 Bar
Hose Pipe 2.5" Dia x 100ft length fitted with male female coupling
NAFFCO.
Inlet 2.5" male BS336 connection Brass material



Defender/FE/FG-0014



FOAM CHAMBER

Defender/FE/RMFMU-120



021-32222322
firedefenders@gmail.com

DESCRIPTION

Foam Chamber is used in one of the most common application to protect vertical fixed roof (cone) liquid storage tanks, with or without internal floating roof with the low expansion foam system. The application of foam is on the basis that the risk comprises the total surface area of the fuel. The foam system design guidelines generally used are in accordance with NFPA-11, standard.

Foam chambers are defined by NFPA-11 as Type II discharge outlets for delivering the foam to the surface of a flammable liquid. The Foam Chambers are widely used with the Inline Foam Inductor, Balance Pressure Foam Proportioning system, Bladder Tank Proportional or Foam Tender.

Model No.	Inlet Size	Outlet Size	Flow Rate (LPM)		
			AFFF 3% (as per UL)	AFFF 3% (as per FM)	AFFF 6% (as per FM)
FCSS65	65 MM	100 MM	150 - 550	173 - 559	173 - 559
FCSS80	80 MM	150 MM	300 - 1021	330 - 997	338 - 1022
FCSS100	100 NB	200 NB	600 - 2400	658 - 1855	653 - 1839
FCR150	150 NB	250 NB	---*	2497 - 3975	2487 - 4047

FEATURES

Heavy duty welded construction with choice of Carbon Steel or Stainless Steel material Frangible Glass Vapor Seal
Controlled Air Flow proportional to liquid flow for optimum foam quality and rupture of vapor seal in narrow pressure tolerances for increased reliability Field replaceable orifice plate fitted with Foam Chamber



Defender/FE/FG-0015



LOW EXPANSION

Branch Pipe Nozzle



021-32222322
firedefenders@gmail.com

DESCRIPTION

The Hi-Combat Low Expansion foam branchpipes are designed for long range performance. They are available in 3 basic models with nominal foam solution throughputs of 225, 450 and 900 liters /mm at 7 bar. Self inducing models are available in the 225 and 450 liter /minute versions.

All models produce finished foams of nominal expansion 10 : 1 and give foam streams of an exceptional range. The /SH models are fitted with a self-inducing foam inlet connection, foam concentrate pick-up tube and piercer.

The Hi-Combat LEX Branch pipe in action.

There are three basic models with nominal foam solution throughputs of 225, 450 and 900 liters /mm at 7 bar. Self-inducing models are available in the 225 and 450 liter /minute versions. All models produce finished foams of nominal expansion 10 : 1 and give foam streams of an exceptional range. To get the best results from these branchpipes we recommend use with either Tank master Fluor protein foam or Alco seal AR-FFFP multi-purpose foam concentrate. The /SI models are fitted with a self inducing foam inlet connection, foam concentrate pick-up tube and piercer.

Technical Specifications

Type : Low Expansion Nozzle

Inlet : 63mm (2.5") male Instantaneous BS-336 / Storz

Outlet : Foam with Fog

Material : Gunmetal / Stainless Steel /

Finish : Natural polished Black Color



Defender/FE/FG-0016



LOW EXPANSION

Branch Pipe Nozzle



021-32222322
firedefenders@gmail.com

DESCRIPTION

The Hi-Combat Low Expansion foam branchpipes are designed for long range performance. They are available in 3 basic models with nominal foam solution throughputs of 225, 450 and 900 liters /mm at 7 bar. Self inducing models are available in the 225 and 450 liter /minute versions.

All models produce finished foams of nominal expansion 10 : 1 and give foam streams of an exceptional range. The /SH models are fitted with a self-inducing foam inlet connection, foam concentrate pick-up tube and piercer.

The Hi-Combat LEX Branch pipe in action.

There are three basic models with nominal foam solution throughputs of 225, 450 and 900 liters /mm at 7 bar. Self-inducing models are available in the 225 and 450 liter /minute versions. All models produce finished foams of nominal expansion 10 : 1 and give foam streams of an exceptional range. To get the best results from these branchpipes we recommend use with either Tank master Fluor protein foam or Alco seal AR-FFFP multi-purpose foam concentrate. The /SI models are fitted with a self inducing foam inlet connection, foam concentrate pick-up tube and piercer.

Technical Specifications

Type : Low Expansion Nozzle

Inlet : 63mm (2.5") male Instantaneous BS-336 / Storz

Outlet : Foam with Fog

Material : Gunmetal / Stainless Steel /

Finish : Natural polished Black Color



Defender/FE/FG-0018

Defender/FE/FG-0017



RAPTOR FOAM NOZZLE

Dual Flow Foam Nozzle

Defender/FE/RMFMU-120



021-32222322
firedefenders@gmail.com

DESCRIPTION

The Raptor Dual Flow Foam Nozzle is ideal for fighting shallow spill fires and is particularly favored by professional firefighters in the aviation industry.

The light alloy, ergonomically designed pistol grip, and trigger on/off control enable the nozzle to be controlled at the same time as the flow rate is adjusted. The body is manufactured in light alloy for ease of handling and all alloy components are hard anodized to provide corrosion protection and a long lasting protective surface finish.

The Raptor Dual Flow Foam Nozzle provides professional fire fighters with a range of flow combinations to meet their needs without having to leave the area of the incident to change nozzles. The light alloy, ergonomically designed pistol grip, and trigger on/off control enable the nozzle to be controlled at the same time as the flow rate is adjusted. The body is manufactured in light alloy for ease of handling and all alloy components are hard anodized to provide corrosion protection and a long lasting protective surface finish.

Technical Specifications

Type : Raptor Dual Flow Foam Nozzle

Inlet : 63mm (2.5") male Instantaneous BS-336 / Storz

Outlet : Raptor Dual Flow Foam Nozzle

Material : Gunmetal / Stainless Steel /

Finish : Natural polished Black Color



DESCRIPTION

These branchpipes produce medium expansion foam which is effective in a wide range of fires involving flammable liquids and solids. Fabricated in stainless steel the units are tough, lightweight and compact, fitting easily into fire appliance lockers. They produce long throws of a coherent foam stream at low pressures and the high volume of foam produced gives rapid coverage over a large area but with minimum water usage. This makes them ideal for rapid foam cover in outdoor situations or for enclosed fires where total flooding with foam is possible.

The Branchpipes are matched to Angus Foam Uniductors. The MEX 225U matches the Angus UNI-225 Inductor and the MEX 450U matches the Angus UNI 450 Inductor.

The C6 Integrity foam concentrates produce stable high performance medium expansion foams when used with MEX Branchpipes and MEX Pourers.

MEX Branchpipes / Pourers are also suitable for use in fixed systems.

Technical Specifications

Type : Manual Hi Combat Medium Expansion Nozzle

Inlet : 63mm (2.5") male Instantaneous BS-336 / Storz

Outlet : Foam with fog

Material : Gunmetal / Stainless Steel /

Finish : Natural polished Black Color



Defender/FE/FG-0020

DESCRIPTION

These branchpipes produce medium expansion foam which is effective in a wide range of fires involving flammable liquids and solids. Fabricated in stainless steel the units are tough, lightweight and compact, fitting easily into fire appliance lockers. They produce long throws of a coherent foam stream at low pressures and the high volume of foam produced gives rapid coverage over a large area but with minimum water usage. This makes them ideal for rapid foam cover in outdoor situations or for enclosed fires where total flooding with foam is possible.

The Branchpipes are matched to Angus Foam Uniductors. The MEX 225U matches the Angus UNI-225 Inductor and the MEX 450U matches the Angus UNI 450 Inductor.

The C6 Integrity foam concentrates produce stable high performance medium expansion foams when used with MEX Branchpipes and MEX Pourers.

MEX Branchpipes / Pourers are also suitable for use in fixed systems.

Technical Specifications

Type : Raptor Dual Flow Foam Nozzle

Inlet : 63mm (2.5") male Instantaneous BS-336 / Storz

Outlet : Raptor Dual Flow Foam Nozzle

Material : Gunmetal / Stainless Steel /

Finish : Natural polished Black Color



Defender/FE/FG-0021

TECHNICAL DATA

FIRE FIGHTING FOAM EQUIPMENT

Specifications

Model No.	Defender/FE/FG-001
Material	F.R.P & Bronze
Type	Mobile or Fixed
Connection Size	BS336 2.5" instantaneous male
Flow Rate	190 LPM
Inlet Pressure	0.4MPa
Expansion Ratio	500 : 1 (Foam Ratio - 3%)



Defender/FE/FG-0021

High Expansion Foam has many applications in modern fire fighting including:

- Municipal Fire Departments
- Marine – Engine Rooms, Machinery spaces, Holds
- Industry – Total Flooding Applications Such As Basements, Flammable Liquid Stores and cable Ducts,
- Control of Vapors Released Foam flammable or Toxic Liquid Escapes

Large volumes of foam can be produced rapidly to exclude oxygen from the risk area and very low water consumption means less damage after the inside.

Large volumes of foam can be produced rapidly to exclude oxygen from the risk area and very low water consumption means less damage after the incidence.

Defender manufactures two high expansion foam generators – The Turbex MK II and the Mini Turbex – both are high capacity units with the additional feature of smoke extraction capability.

TURBEX MKII

The Defender HI-COMBAT Turbex MK II is a high capacity, portable high expansion foam generator. Powered by a water turbine, a unique by-pass system allows performance to be maintained when working against high back pressure.

- High performance – 7000 cu ft / min at 145 psi
- Economical – 1.2 gpm foam concentrate consumption at 100 psi
- Mineral water damage – maximum expansion ratio of 1100:1 gives maximum oxygen exclusion with the least water usage.
- Foam can be directed accurately – the Turbex is supplied with 10ft of expendable polythene ducting
- Smoke extraction capability – 10000 cu ft / min at 100 psi

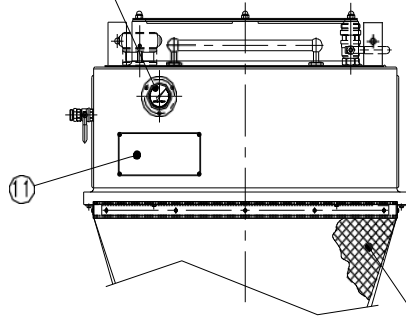
TECHNICAL DATA

FIRE FIGHTING FOAM EQUIPMENT

HIGH EXPANSION FOAM GENERATOR / Defender/FE/FG-001 / Manual / Fixed Type

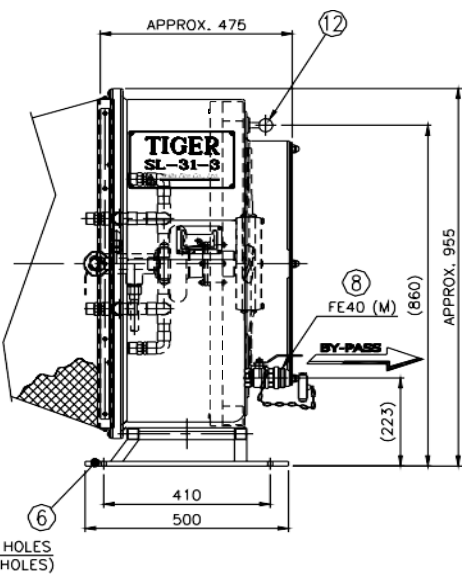
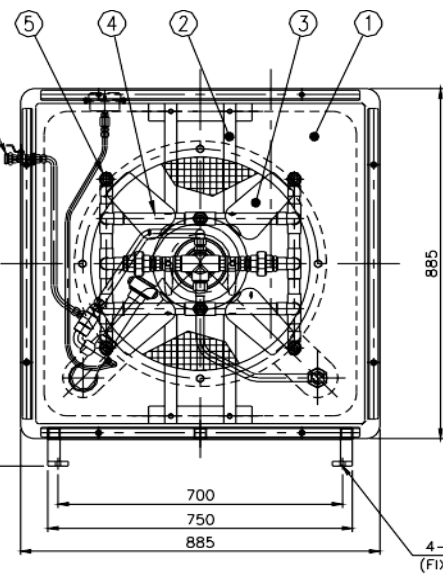
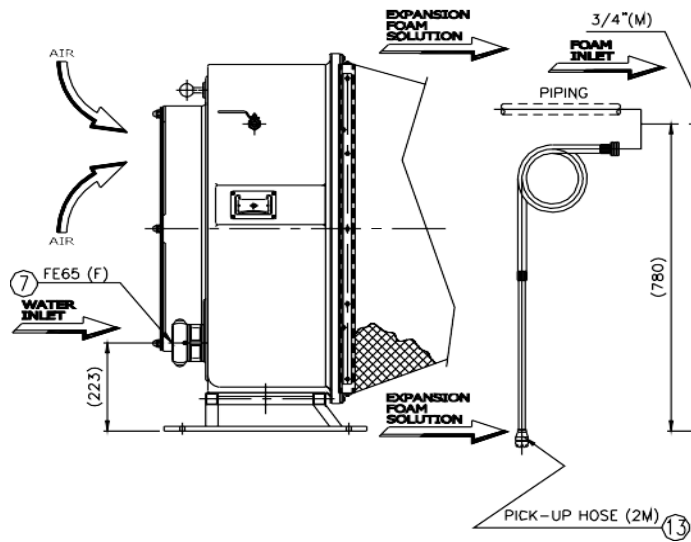


PRESSURE GAUGE
0~15Kg/cm²



11

9



TECHNICAL DATA

FIRE FIGHTING FOAM EQUIPMENT

High Expansion Foam has many applications in modern fire fighting including:

- Municipal Fire Departments
- Marine – Engine Rooms, Machinery spaces, Holds
- Industry – Total Flooding Applications Such As Basements, Flammable Liquid Stores and cable Ducts,
- Control of Vapors Released Foam flammable or Toxic Liquid Escapes

Large volumes of foam can be produced rapidly to exclude oxygen from the risk area and very low water consumption means less damage after the incidence.

Defender manufactures two high expansion foam generators – The Turbex MK II and the Mini Turbex – both are high capacity units with the additional feature of smoke extraction capability.

MINI TURBEX

The Defender HI-Combat Mini Turbex has been designed as a first aid high expansion foam generator. It can be rapidly deployed by one man, giving valuable time to deploy larger units such as the Turbex MK II.

- Compact – overall dimensions – 25 x 20 x 13 inches.
- Lightweight – 35 lbs (excluding net)
- High Capacity – 3300 cu ft / min at 120 psi
- Smoke Extraction capability – 3500 cu ft / min at 100 psi
- Robust – Stainless steel construction
- Compatible – the unit uses the Hi – combat IND 225 educator

MINI TURBEX



Defender/FE/FG-0022